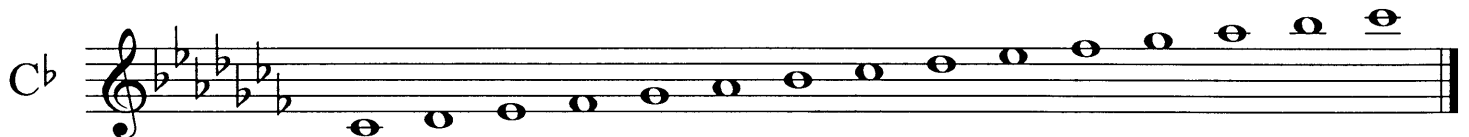
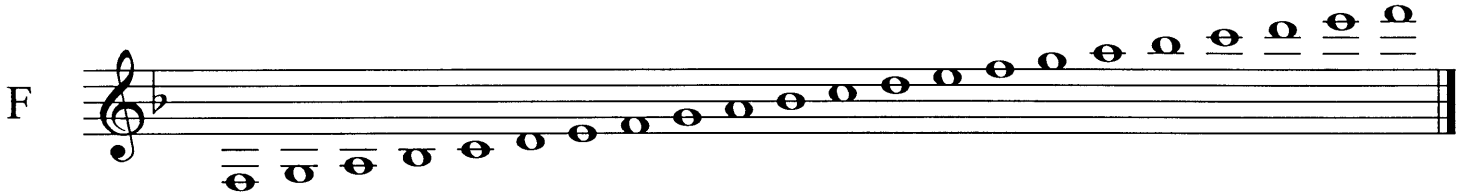


MAJOR SCALES I


Clarinet



MAJOR SCALES II

Clarinet

G



A musical staff in treble clef with a key signature of one sharp (F#). It contains the G major scale: G4, A4, B4, C5, D5, E5, F#5, G5. The notes are written as quarter notes with stems pointing down, and the staff is slanted upwards.

D



A musical staff in treble clef with a key signature of two sharps (F#, C#). It contains the D major scale: D4, E4, F#4, G4, A4, B4, C#5, D5. The notes are written as quarter notes with stems pointing down, and the staff is slanted upwards.

A




A musical staff in treble clef with a key signature of three sharps (F#, C#, G#). It contains the A major scale: A4, B4, C#5, D5, E5, F#5, G#5, A5. The notes are written as quarter notes with stems pointing down, and the staff is slanted upwards.

E




A musical staff in treble clef with a key signature of four sharps (F#, C#, G#, D#). It contains the E major scale: E4, F#4, G#4, A4, B4, C#5, D#5, E5. The notes are written as quarter notes with stems pointing down, and the staff is slanted upwards.

B




A musical staff in treble clef with a key signature of five sharps (F#, C#, G#, D#, A#). It contains the B major scale: B4, C#5, D#5, E5, F#5, G#5, A#5, B5. The notes are written as quarter notes with stems pointing down, and the staff is slanted upwards.

F#




A musical staff in treble clef with a key signature of six sharps (F#, C#, G#, D#, A#, E#). It contains the F# major scale: F#4, G#4, A4, B4, C#5, D#5, E#5, F#5. The notes are written as quarter notes with stems pointing down, and the staff is slanted upwards.

C#




A musical staff in treble clef with a key signature of seven sharps (F#, C#, G#, D#, A#, E#, B#). It contains the C# major scale: C#4, D#4, E4, F#4, G#4, A4, B4, C#5. The notes are written as quarter notes with stems pointing down, and the staff is slanted upwards.

Chromatic



A musical staff in treble clef showing a chromatic scale ascending from G4 to G5. The notes are G4, G#4, A4, A#4, B4, B#4, C5, C#5, D5, D#5, E5, E#5, F5, F#5, G5. The notes are written as quarter notes with stems pointing down.



A musical staff in treble clef showing a chromatic scale descending from G5 to G4. The notes are G5, F#5, F5, E#5, E5, D#5, D5, C#5, C5, B#4, B4, A#4, A4, G#4, G4. The notes are written as quarter notes with stems pointing down.



A musical staff in treble clef showing a chromatic scale descending from G5 to G4. The notes are G5, F#5, F5, E#5, E5, D#5, D5, C#5, C5, B#4, B4, A#4, A4, G#4, G4. The notes are written as quarter notes with stems pointing down.