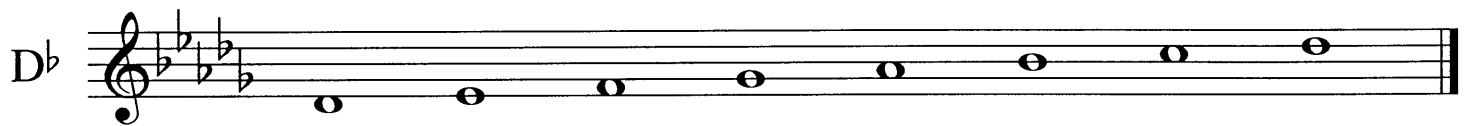


# MAJOR SCALES I

Cornet/Trumpet  
Baritone T.C.



# MAJOR SCALES II

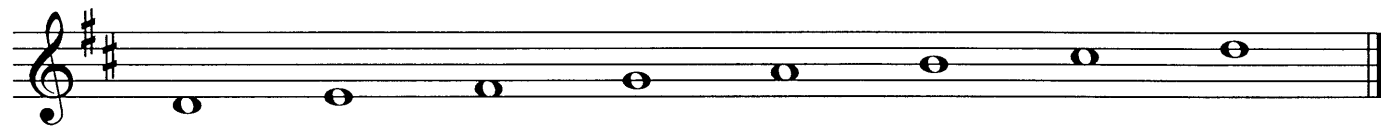
Cornet/Trumpet  
Baritone T.C.

G



Musical staff for G major scale (one sharp). The scale is written in treble clef, starting on G4 and ascending to G5. The notes are G, A, B, C, D, E, F#, G.

D



Musical staff for D major scale (two sharps). The scale is written in treble clef, starting on D4 and ascending to D5. The notes are D, E, F#, G, A, B, C#, D.

A




Musical staff for A major scale (three sharps). The scale is written in treble clef, starting on A3 and ascending to A4. The notes are A, B, C#, D, E, F#, G#, A.

E




Musical staff for E major scale (four sharps). The scale is written in treble clef, starting on E3 and ascending to E4. The notes are E, F#, G#, A, B, C#, D#, E.

B



Musical staff for B major scale (five sharps). The scale is written in treble clef, starting on B2 and ascending to B3. The notes are B, C#, D#, E, F#, G#, A#, B.

F#



Musical staff for F# major scale (six sharps). The scale is written in treble clef, starting on F#3 and ascending to F#4. The notes are F#, G#, A#, B, C#, D#, E#, F#.

C#

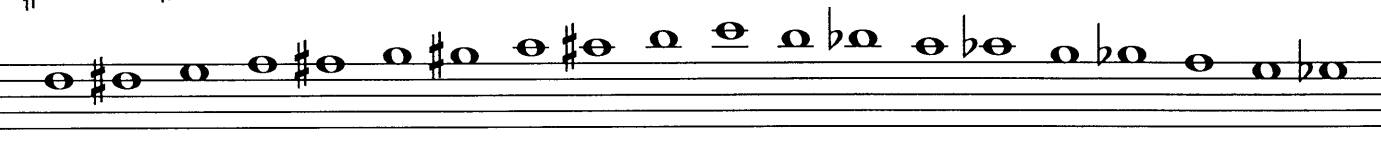


Musical staff for C# major scale (seven sharps). The scale is written in treble clef, starting on C#3 and ascending to C#4. The notes are C#, D#, E#, F#, G#, A#, B#, C#.

## Chromatic



Musical staff for chromatic scale (ascending). The scale is written in treble clef, starting on C4 and ascending to C5. The notes are C, C#, D, D#, E, E#, F, F#, G, G#, A, A#, B, B#, C.



Musical staff for chromatic scale (descending). The scale is written in treble clef, starting on C5 and descending to C4. The notes are C, B, Bb, Ab, G, F, Fb, Eb, D, C, Cb, Bb, Ab, G, F, Fb, Eb, D, C.



Musical staff for chromatic scale (descending). The scale is written in treble clef, starting on C4 and descending to C3. The notes are C, B, Bb, Ab, G, F, Fb, Eb, D, C, Cb, Bb, Ab, G, F, Fb, Eb, D, C.