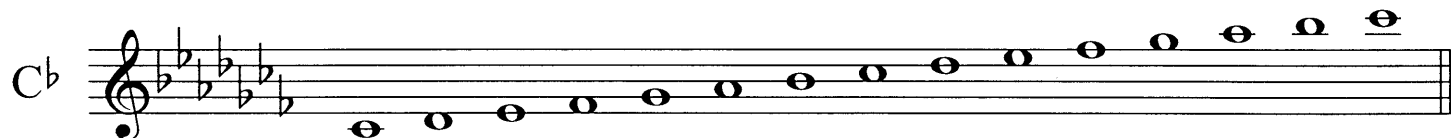
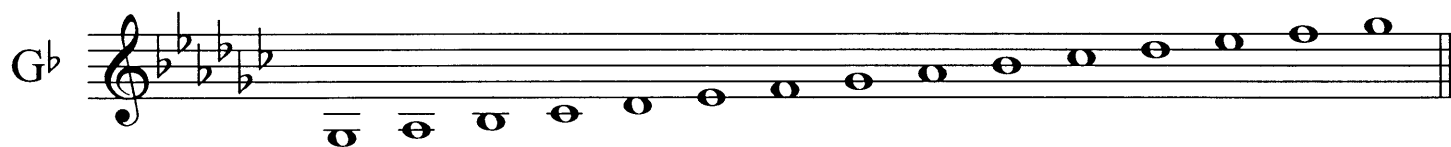
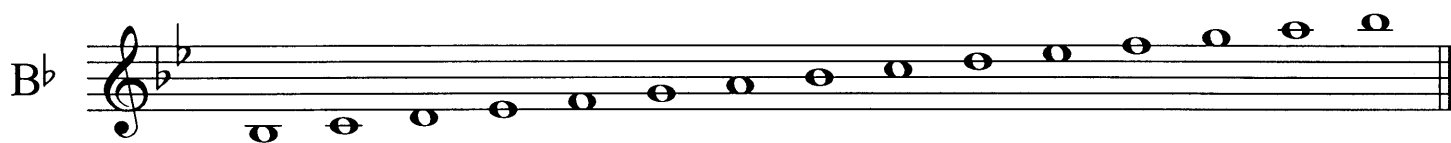


MAJOR SCALES I

Mallets



MAJOR SCALES II

Mallets

G



A musical staff in treble clef with one sharp (F#) in the key signature. The scale is written as a sequence of half notes: G, A, B, C, D, E, F#, G.

D



A musical staff in treble clef with two sharps (F#, C#) in the key signature. The scale is written as a sequence of half notes: D, E, F#, G, A, B, C#, D.

A



A musical staff in treble clef with three sharps (F#, C#, G#) in the key signature. The scale is written as a sequence of half notes: A, B, C#, D, E, F#, G#, A.

E



A musical staff in treble clef with four sharps (F#, C#, G#, D#) in the key signature. The scale is written as a sequence of half notes: E, F#, G#, A, B, C#, D#, E.

B



A musical staff in treble clef with five sharps (F#, C#, G#, D#, A#) in the key signature. The scale is written as a sequence of half notes: B, C#, D#, E, F#, G#, A#, B.

F#



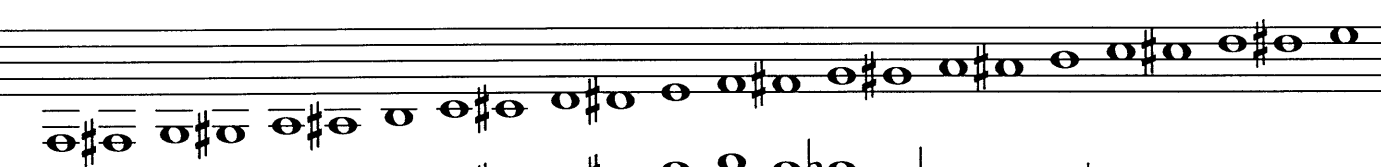
A musical staff in treble clef with six sharps (F#, C#, G#, D#, A#, E#) in the key signature. The scale is written as a sequence of half notes: F#, G#, A#, B, C#, D#, E#, F#.

C#



A musical staff in treble clef with seven sharps (F#, C#, G#, D#, A#, E#, B#) in the key signature. The scale is written as a sequence of half notes: C#, D#, E#, F#, G#, A#, B#, C#.

Chromatic



A musical staff in treble clef showing the ascending chromatic scale: C, C#, D, D#, E, E#, F, F#, G, G#, A, A#, B, B#, C.



A musical staff in treble clef showing the descending chromatic scale: C, B, Bb, Ab, G, F, Fb, Eb, D, C, Cb, Bb, Ab, G, F, Fb, Eb, D, C.



A musical staff in treble clef showing the descending chromatic scale: C, B, Bb, Ab, G, F, Fb, Eb, D, C, Cb, Bb, Ab, G, F, Fb, Eb, D, C.